



KOBE Range Hoods

"So Quiet ... You Won't Believe It's On!"

IN28 SQP-XX Parts Location and Replacement

*This basic guide is to show the parts location of the IN28 SQP-XX and how to remove or install certain parts.
To see more detailed guidelines, please visit: [KOBE Service and Repair](#)*

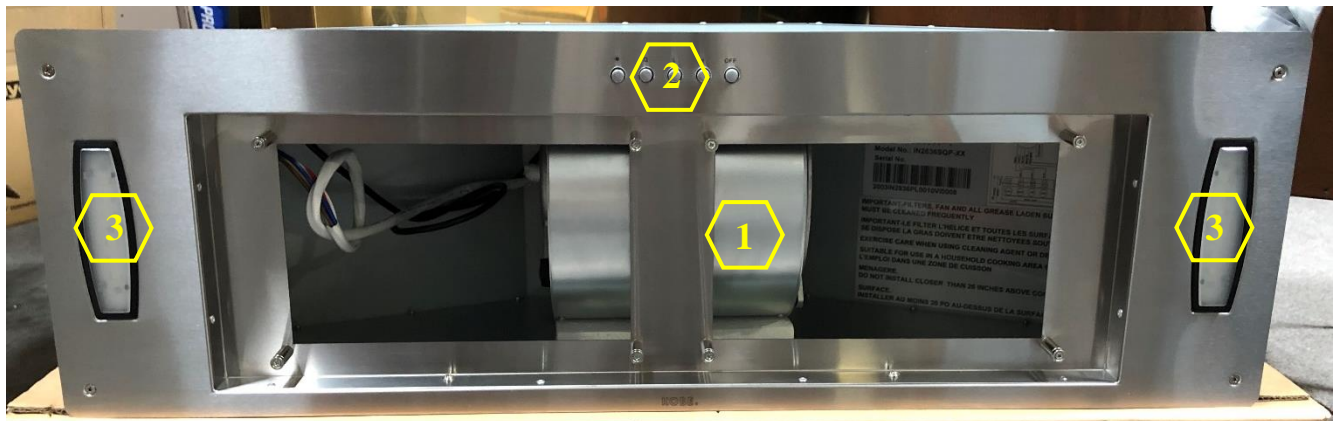
For 30" model: IN2830SQP-XX

For 36" model: IN2836SQP-XX

Overall Snapshot of IN28 SQP-XX



IN2830SQP-XX (30")



IN2836SQP-XX (36")

1. Blower System (Manual Part #3 – See “Parts List” page on manual)
2. Control Switch (Manual Part #7 – See “Parts List” page on manual)
3. LED Light (6W) (Manual Part #8 – See “Parts List” page on manual)



KOBE Range Hoods

"So Quiet ... You Won't Believe It's On!"

Removing the Bottom Casing



Figure 1



Figure 2



Figure 3



Figure 4



KOBE Range Hoods

"So Quiet ... You Won't Believe It's On!"

Accessing the Capacitor and LED Driver

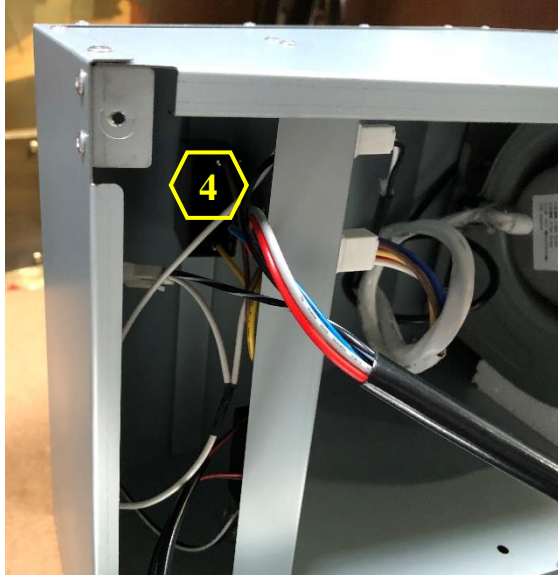


Figure 1



Figure 2

4. Capacitor (Manual Part #6 – See “Parts List” page on manual)
5. LED Driver (Manual Part #5 – See “Parts List” page on manual)

Removing the Blower System

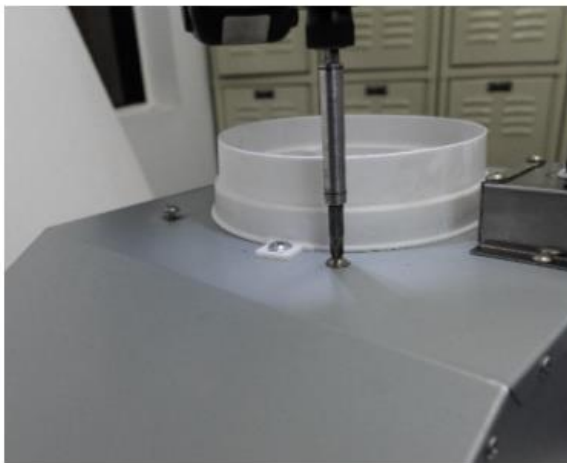


Figure 1

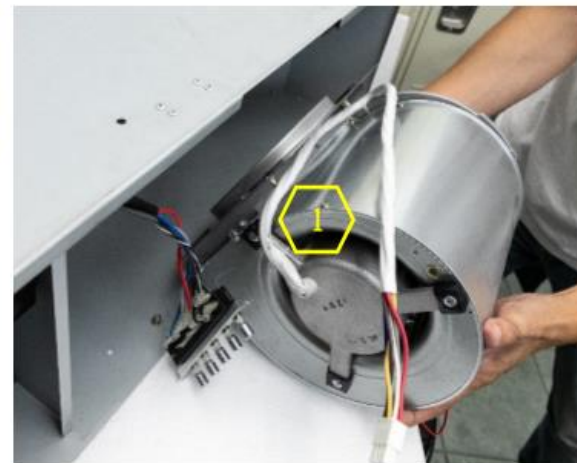


Figure 2

1. Blower System (Manual Part #3 – See “Parts List” page on manual)



KOBE Range Hoods

"So Quiet ... You Won't Believe It's On!"

Removing the Control Switch

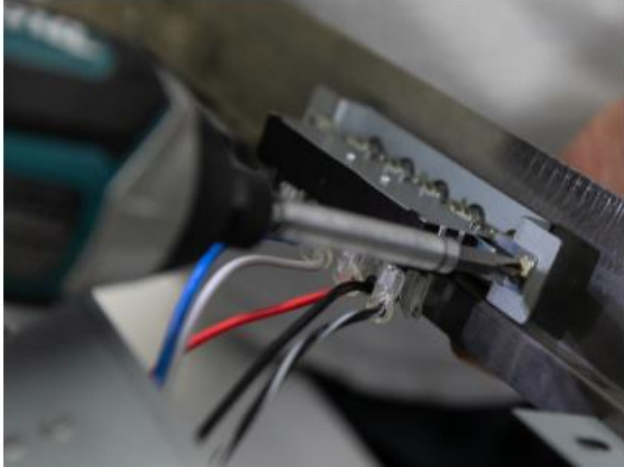


Figure 1



Figure 2

Accessing LED Light

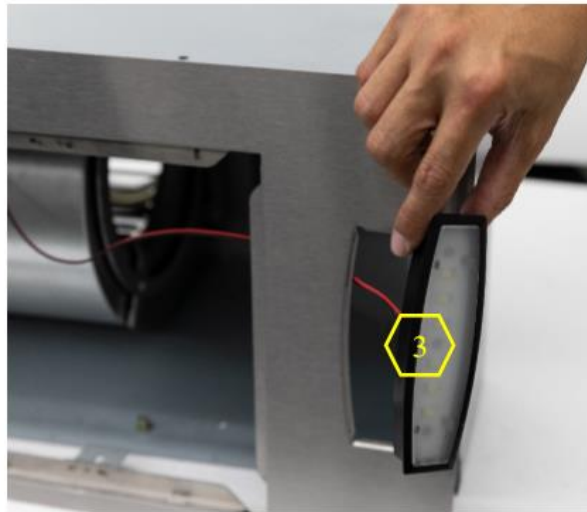


Figure 1

2. Control Switch (Manual Part #7 – See “Parts List” page on manual)
3. LED Light (6W) (Manual Part #8 – See “Parts List” page on manual)