



KOBE Range Hoods

"So Quiet ... You Won't Believe It's On!"

CH77 SQ6-XX Parts Location and Replacement

*This basic guide is to show the parts location of the CH77 SQ6-XX and how to remove or install certain parts.
To see more detailed guidelines, please visit: [KOBE Service and Repair](#)*

For 30" model: CH7730SQ6-XX / CH7730SQ6-WM-XX

For 36" model: CH7736SQ6-XX / CH7736SQ6-WM-XX

For 48" model: CH7748SQ6-XX / CH7748SQ6-WM-XX

Overall Snapshot of CH77 SQ6-XX



1. Blower System (Manual Part #2 – See “Parts List” page on manual)
2. LED Light (3W) (Manual Part #11 – See “Parts List” page on manual)
3. Control Unit (Manual Part #6 – See “Parts List” page on manual)



KOBE Range Hoods

"So Quiet ... You Won't Believe It's On!"

Accessing the Processor Board, UV Sensor, Capacitor, Motor Transformer

Warning: Loosen the screw fist with a hand tool screw driver.

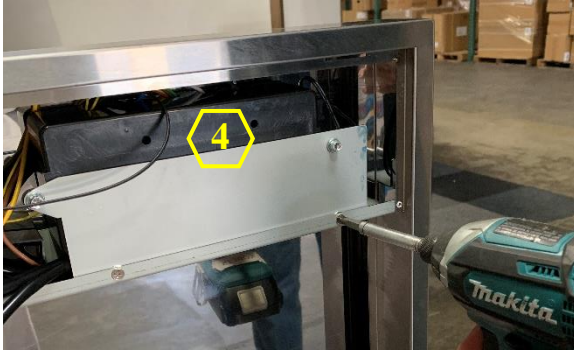
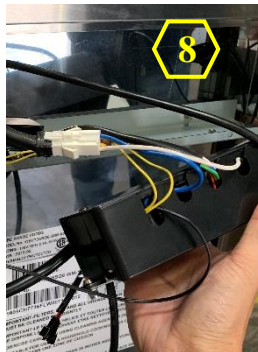
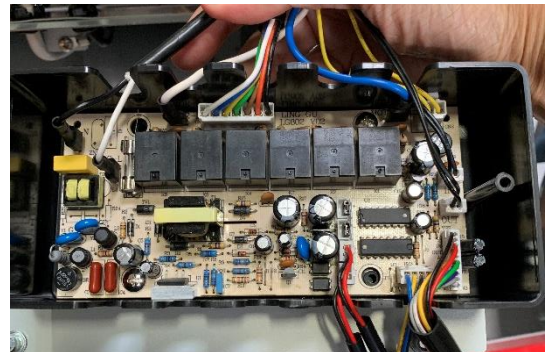
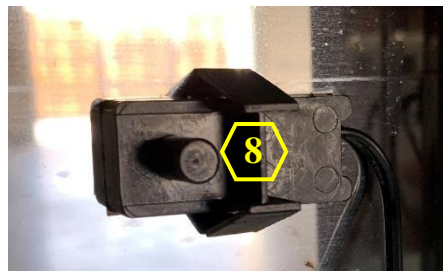


Figure 1



Figure 2

4. Processor Board (Manual Part #9 – See “Parts List” page on manual)
5. UV Sensor (Manual Part #8 – See “Parts List” page on manual)
6. Capacitor (Manual Part #7 – See “Parts List” page on manual)
7. Motor Transformer (Manual Part #5 – See “Parts List” page on manual)

Removing the Process Board and Accessing the Temperature Sensor**Figure 1****Figure 2****Figure 3****Figure 4****Figure 5****Figure 6**

- 4. Process Board (Manual Part #9 – See “Parts List” page on manual)
- 8. Temperature Sensor (Manual Part #4 – See “Parts List” page on manual)



KOBE Range Hoods

"So Quiet ... You Won't Believe It's On!"

Removing the Control Unit



Figure 1



Figure 2

Warning: Loosen the screw fist with a hand tool screw driver.

3. Control Unit (Manual Part #6 – See “Parts List” page on manual)

Removing the UV Sensor



Figure 1



Figure 2

5. UV Sensor (Manual Part #8 – See “Parts List” page on manual)

Accessing the LED Light



For a more detailed guideline, visit: [How to Replace LED Lights](#)



KOBE Range Hoods

"So Quiet ... You Won't Believe It's On!"

Removing the Blower System

Warning:

1. Loosen the screw first with a hand tool screw driver.
2. Place a support or hold the blower before removing it.



Figure 1

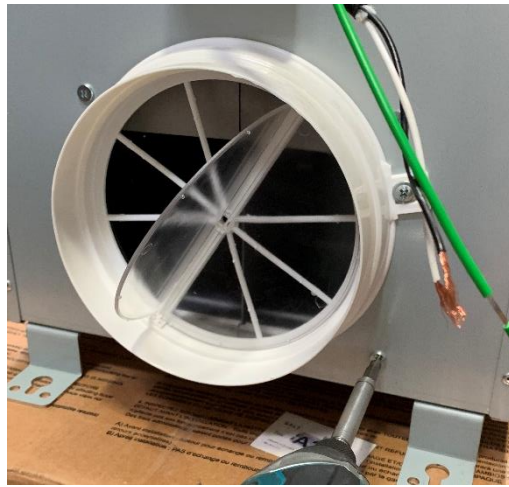


Figure 2



Figure 3

1. Blower System (Manual Part #2 – See “Parts List” page on manual)