



KOBE Range Hoods

“So Quiet...You Won't Believe It's On!”

RAX95 SQB-1 Parts Location and Replacement

*This basic guide is to show the parts location of the RAX95 SQB-1 and how to remove or install certain parts.
To see more detailed guidelines, please visit: [Kobe Service and Repair](#)*

*For models (w/ Standard Duct Cover): RAX9530SQB-DC-1, RAX9536SQB-DC-1, RAX9542SQB-DC-1,
RAX9548SQB-DC-1 or RAX9530SQB-1, RAX9536SQB-1, RAX9542SQB-1, RAX9548SQB-1
For models (w/ 24" Duct Extension): RAX9530SQB-DC24-1, RAX9536SQB-DC24-1, RAX9542SQB-DC24-1,
RAX9548SQB-DC-24-1*

Overall Snapshot of RAX95 SQB-1



1. Motor ([Manual](#) Part #8 – See “Parts List” page on manual)
2. Knobs ([Manual](#) Part #s 5 – See “Parts List” page on manual)
3. LED Light (3W) ([Manual](#) Part #3 – See “Parts List” page on manual)



KOBE Range Hoods

"So Quiet...You Won't Believe It's On!"

Removing the Capacitor Panel

Warning: Loosen the screw first with a hand tool screw driver.

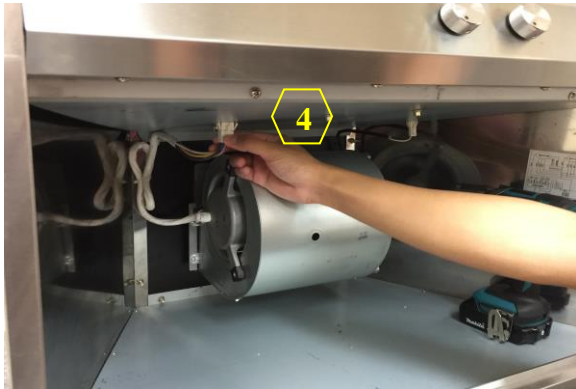


Figure 1

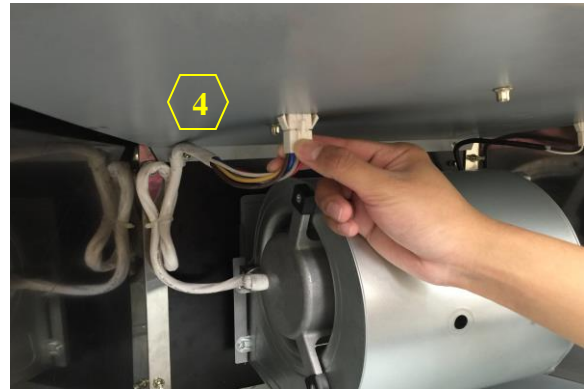


Figure 2

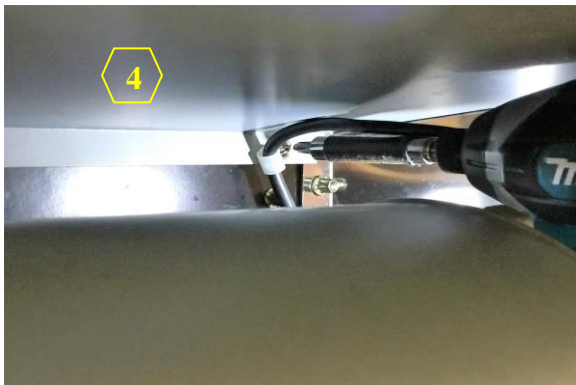


Figure 3



Figure 4

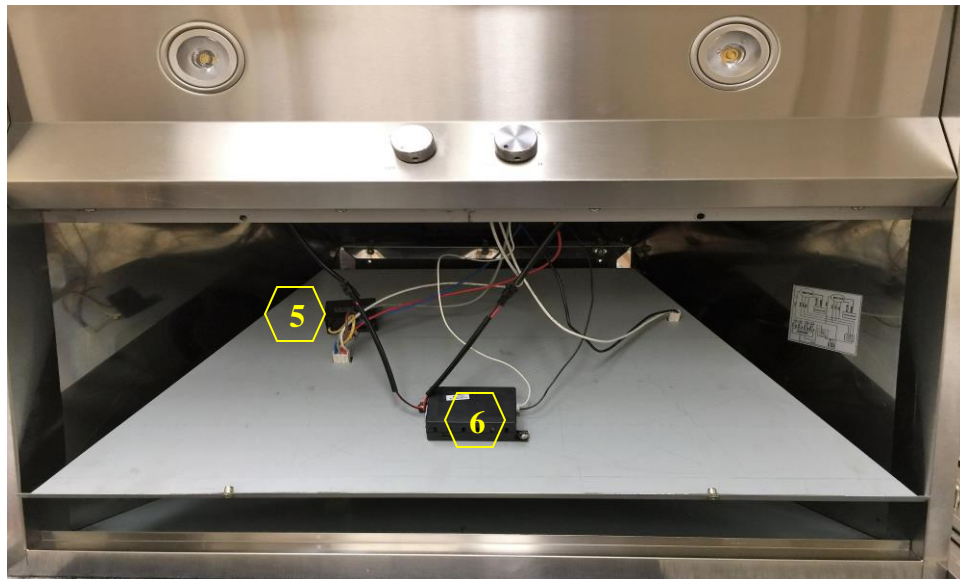
4. Capacitor Panel ([Manual](#) Part #11 – See “Parts List” page on manual)



KOBE Range Hoods

"So Quiet...You Won't Believe It's On!"

Accessing the Capacitor and LED Driver



- 5. Capacitor ([Manual](#) Part #9 – See “Parts List” page on manual)
- 6. LED Driver ([Manual](#) Part #10 – See “Parts List” page on manual)



KOBE Range Hoods

"So Quiet...You Won't Believe It's On!"

Removing the Control Knobs



Figure 1



Figure 2



Figure 3

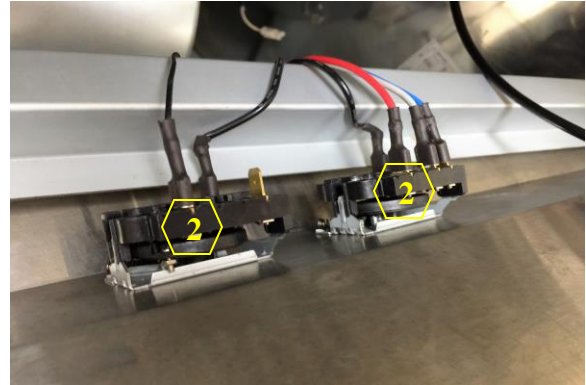


Figure 4

Accessing the LED Light



For a more detailed guideline, visit:
[How to Replace LED Lights](#)

Removing the Motor

Warning:

1. Loosen the screw first with a hand tool screw driver.
2. Place a support or hold the blower before removing it.

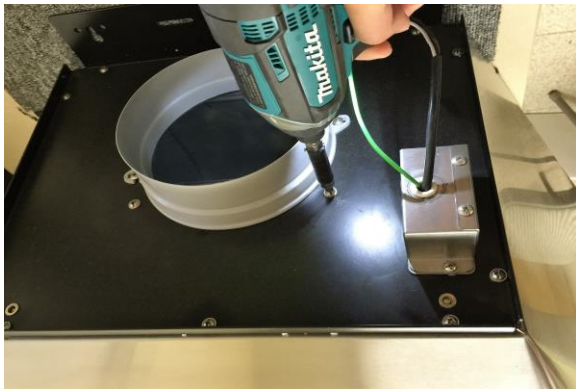


Figure 1

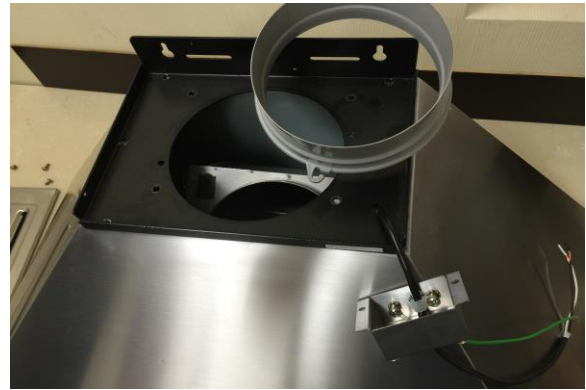


Figure 2

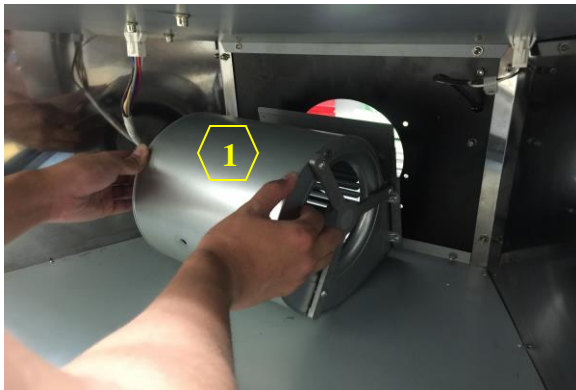


Figure 3



Figure 4

1. Motor ([Manual](#) Part #8 – See “Parts List” page on manual)