



KOBE Range Hoods

"So Quiet...You Won't Believe It's On!"

RA02 SQB-1 Parts Location and Replacement

*This basic guide is to show the parts location of the RA02 SQB-1 and how to remove or install certain parts.
To see more detailed guidelines, please visit: [Kobe Service and Repair](#)*

*For models (w/ Standard Duct Cover): RA0230SQB-DC-1, RA0236SQB-DC-1, RA0242SQB-DC-1, RA0248SQB-DC-1 or
RA0230SQB-1, RA0236SQB-1, RA0242SQB-1, RA0248SQB-1*

*For models (w/ 24" Duct Extension): RA0230SQB-DC24-1, RA0236SQB-DC24-1, RA0242SQB-DC24-1,
RA0248SQB-DC24-1*

Overall Snapshot of RA02 SQB-1



1. Blower System ([Manual](#) Part #8 – See “Parts List” page on manual)
2. Knobs ([Manual](#) Part #5 – See “Parts List” page on manual)
3. LED Light (3W) ([Manual](#) Part #3 – See “Parts List” page on manual)



KOBE Range Hoods

"So Quiet...You Won't Believe It's On!"

Removing the Capacitor Panel

Warning: Loosen the screw first with a hand tool screw driver.

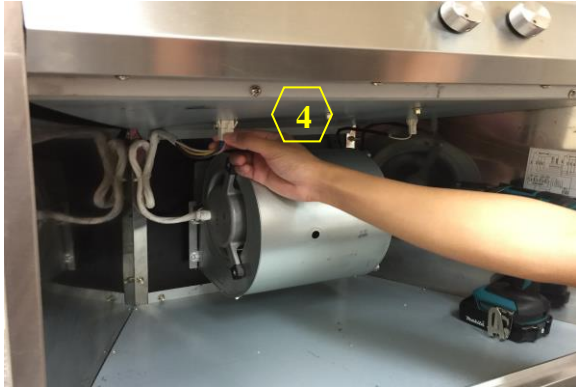


Figure 1



Figure 2

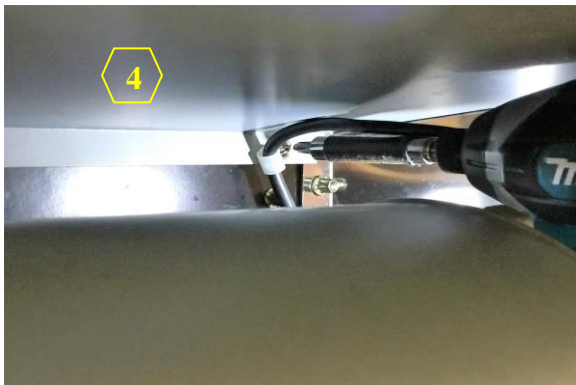


Figure 3



Figure 4

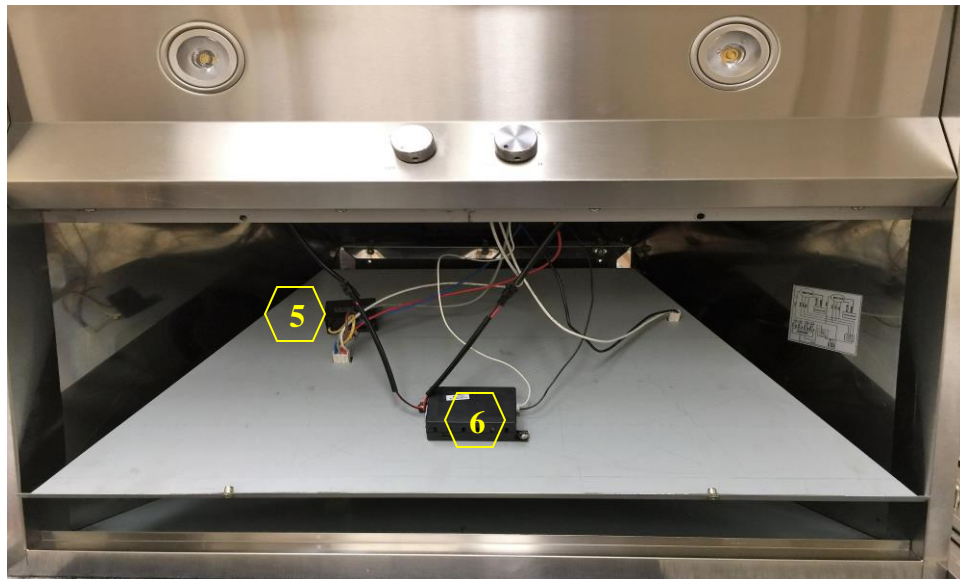
4. Capacitor Panel ([Manual](#) Part #11 – See “Parts List” page on manual)



KOBE Range Hoods

"So Quiet...You Won't Believe It's On!"

Accessing the Capacitor and LED Driver



- 5. Capacitor ([Manual](#) Part #9 – See “Parts List” page on manual)
- 6. LED Driver ([Manual](#) Part #10 – See “Parts List” page on manual)



KOBE Range Hoods

"So Quiet...You Won't Believe It's On!"

Removing the Control Knobs



Figure 1



Figure 2



Figure 3

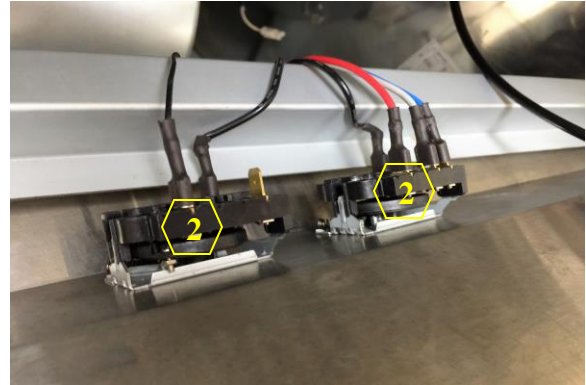


Figure 4

Accessing the LED Light



For a more detailed guideline, visit:
[How to Replace LED Lights](#)

Removing the Motor

Warning:

1. Loosen the screw first with a hand tool screw driver.
2. Place a support or hold the blower before removing it.

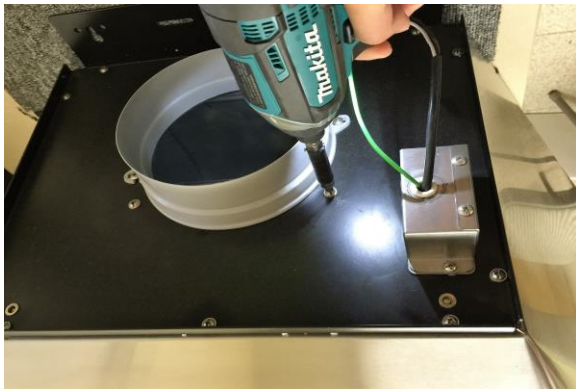


Figure 1

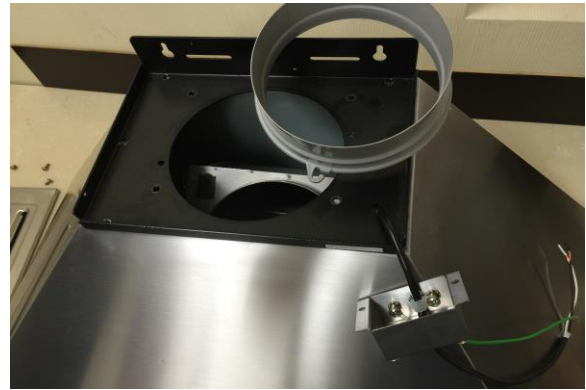


Figure 2

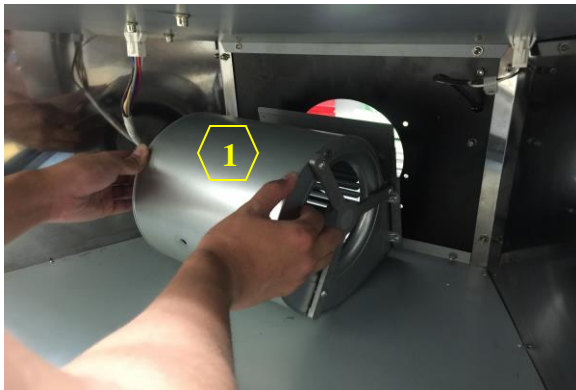


Figure 3



Figure 4

1. Blower System ([Manual](#) Part #8 – See “Parts List” page on manual)