



## KOBE Range Hoods

*"So Quiet...You Won't Believe It's On!"*

### CHX30 Parts Location and Replacement

*This basic guide is to show the parts location of the CHX30 and how to remove or install certain parts.  
To see more detailed guidelines, please visit: [Kobe Service and Repair](#)*

*For 290 CFM models: CHX3030PDS-SC, CHX3036PDS-SC, CHX3030PDS-GC, CHX3036PDS-GC*

*For 400 CFM models: CHX3030PDS-SL, CHX3036PDS-SL, CHX3030PDS-GL, CHX3036PDS-GL*

#### **Overall Snapshot of CHX30**



1. Aluminum Filter ([Manual](#) Part #16 – See “Parts List” page on manual)
2. Push Button Control ([Manual](#) Part #5 – See “Parts List” page on manual)
3. Light Fixture (CFL) ([Manual](#) Part #8 – See “Parts List” page on manual)
4. Bottom Casing ([Manual](#) Part #11 – See “Parts List” page on manual)



## KOBE Range Hoods

*"So Quiet...You Won't Believe It's On!"*

### Accessing the Push Button Control



Figure 1



Figure 2



Figure 3

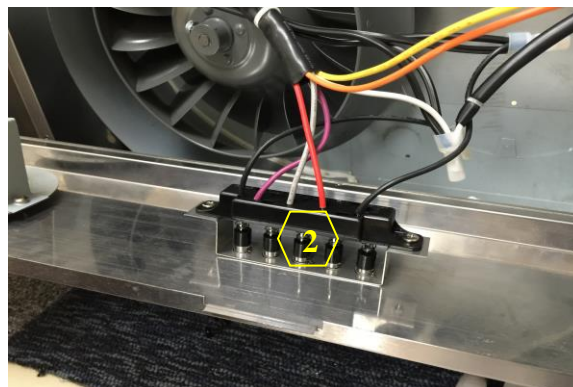


Figure 4

---

**Warning:** For the process above, loosen the screw first with a hand tool screw driver.

---

### Accessing the Light Fixture



Note: Align the light into the socket accordingly then twist clockwise to secure it in place.





## KOBE Range Hoods

*"So Quiet...You Won't Believe It's On!"*

### Removing the Impeller



Figure 1



Figure 2



Figure 3



Figure 4



Figure 5



Figure 6

**Warning:** For the process above, loosen the screw first with a hand tool screw driver.

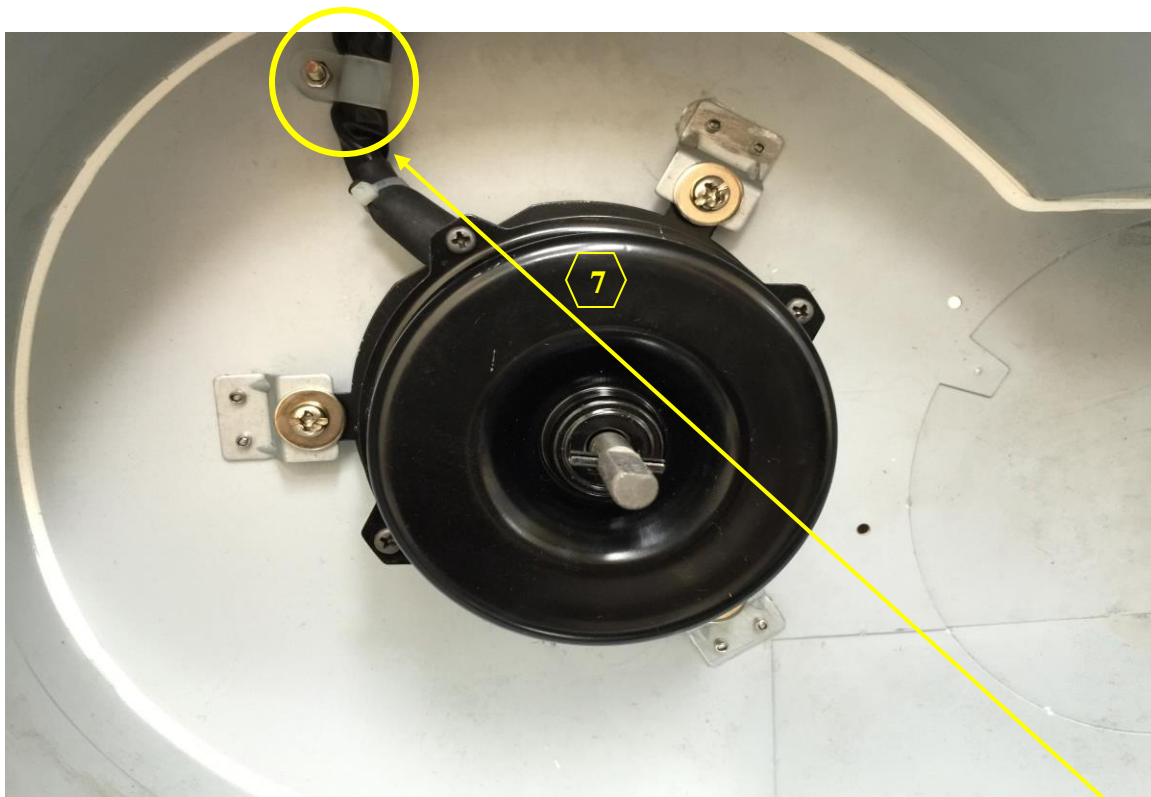
5. Safety Screen ([Manual](#) Part #13 – See “Parts List” page on manual)
6. Turbine Impeller ([Manual](#) Part #10 – See “Parts List” page on manual)
7. Motor ([Manual](#) Part #9 – See “Parts List” page on manual)



## KOBE Range Hoods

*"So Quiet...You Won't Believe It's On!"*

### Attaching the Motor



**Note:** When placing back the motor, make sure that the wire is properly placed underneath the wiring guard. This is to prevent the wire from turning loose and hitting the turbine impeller.



## KOBE Range Hoods

*"So Quiet...You Won't Believe It's On!"*

### Attaching Back the Impeller



Figure 1



Figure 2

---

**Warning:** Do not  
overtighten the  
nut.

---

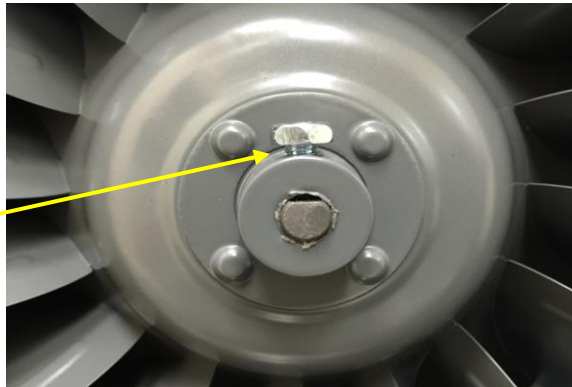


Figure 3



Figure 4

**Note:** When attaching back the impeller, make sure that the open tube in the middle of the impeller is aligned evenly to the metal rod in the center of the motor. The metal rod should not be sticking out of the tube.





## KOBE Range Hoods

*"So Quiet...You Won't Believe It's On!"*

*More on attaching the impeller:*

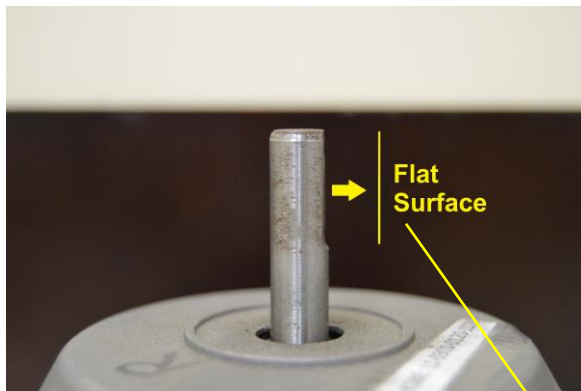


Figure 1

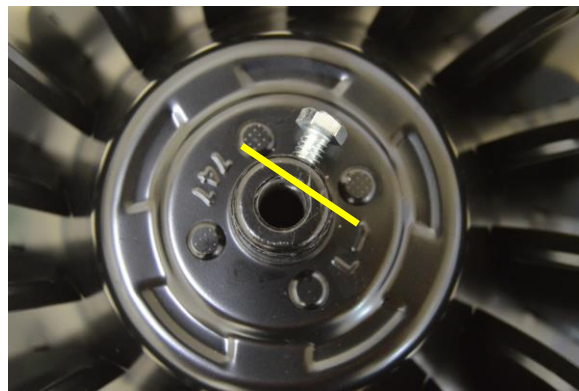


Figure 2

---

**Warning:** Make sure to attach the screw on the flat surface of the motor's metal rod.

---



Figure 3