



KOBE Range Hoods

"So Quiet...You Won't Believe It's On!"

CHX20 SQB-1 Parts Location and Replacement

*This basic guide is to show the parts location of the CHX20 SQB-1 and how to remove or install certain parts.
To see more detailed guidelines, please visit: [Kobe Service and Repair](#)*

For under cabinet models: CHX2030SQB-1 and CHX2036SQB-1

Overall Snapshot of CHX20 SQB-1



1. Plastic Oil Tunnel ([Manual](#) Part #13 – See “Parts List” page on manual)
2. Safety Screen ([Manual](#) Part #14 – See “Parts List” page on manual)
3. LED Light (3W) ([Manual](#) Part #4 – See “Parts List” page on manual)



KOBE Range Hoods

"So Quiet...You Won't Believe It's On!"

Removing the Capacitor Support

Warning:

1. Loosen the screw first with a hand tool screw driver.
2. When pulling the wires from the capacitor support, press the 'push release' at the back of the cord.



Figure 1



Figure 2



Figure 3



Figure 4

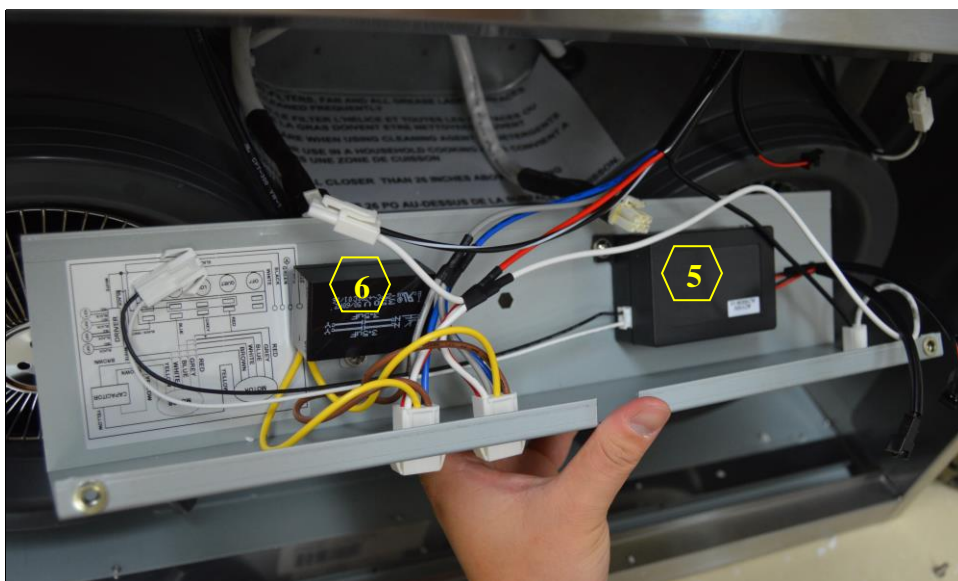
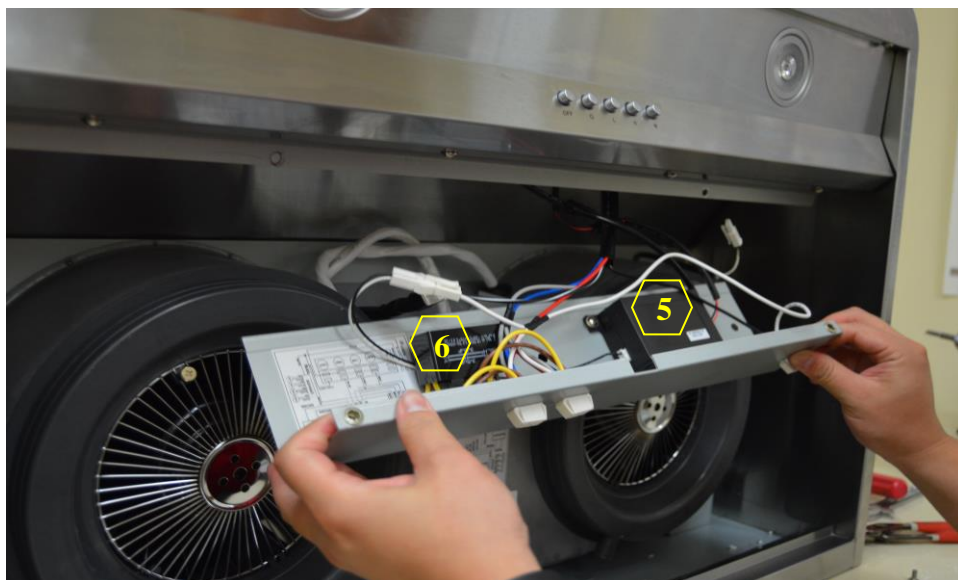
4. Capacitor Support ([Manual](#) Part #6 – See "Parts List" page on manual)



KOBE Range Hoods

"So Quiet...You Won't Believe It's On!"

Accessing the LED Driver and Capacitor



- 5. LED Light Driver ([Manual](#) Part #7 – See “Parts List” page on manual)
- 6. Capacitor ([Manual](#) Part #8 – See “Parts List” page on manual)



KOBE Range Hoods

"So Quiet...You Won't Believe It's On!"

Accessing the Control Switch



Figure 1



Figure 2



Figure 3

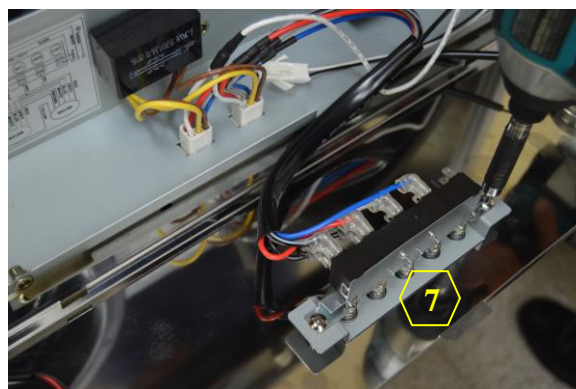


Figure 4

7. Control Switch ([Manual](#) Part #5 – See “Parts List” page on manual)

Accessing the LED Light



Warning: For the process above, loosen the screw first with a hand tool screw driver.

For a more detailed guideline, visit:
[How to Replace LED Lights](#)



KOBE Range Hoods

"So Quiet...You Won't Believe It's On!"

Removing the Impeller



Figure 1

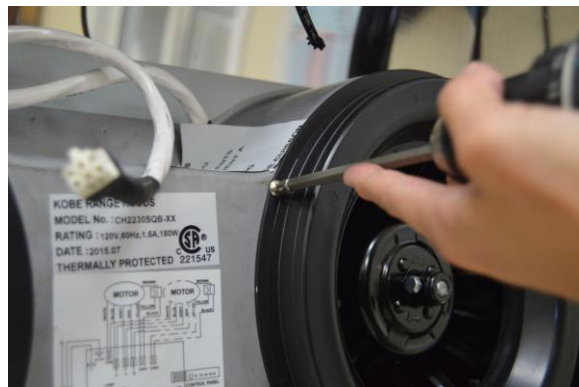


Figure 2



Figure 3



Figure 4



Figure 5



Figure 6

8. Turbine Impeller ([Manual](#) Part #11 and #12 – See “Parts List” page on manual)
9. Motor ([Manual](#) Part #9 and #10 – See “Parts List” page on manual)



KOBE Range Hoods

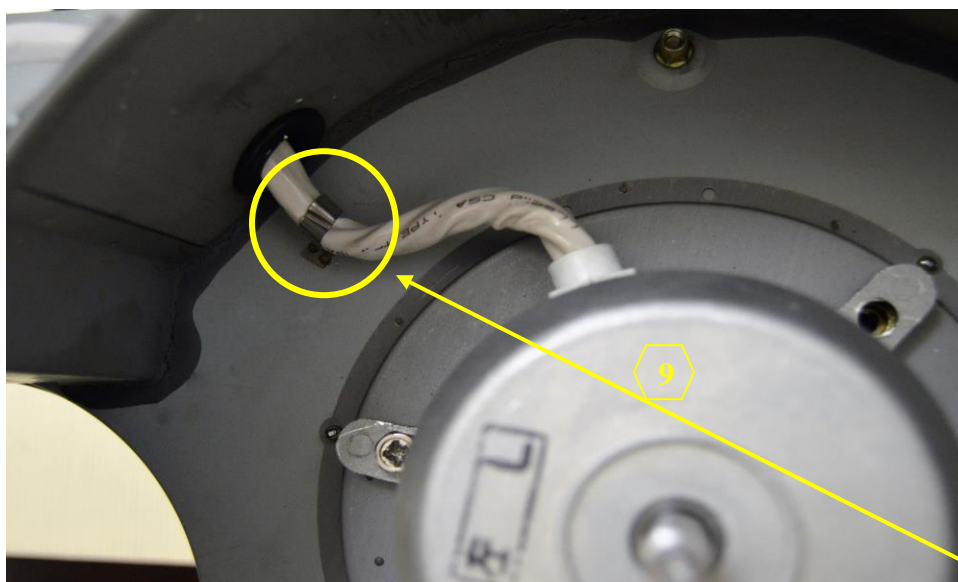
"So Quiet...You Won't Believe It's On!"

Removing the Motor

Warning: Loosen the screw first with a hand tool screw driver.



Attaching Back the Motor



Note: When placing back the motor, make sure that the wire is properly placed underneath the metal wiring guard. This is to prevent the wire from turning loose and hitting the turbine impeller.



KOBE Range Hoods

"So Quiet...You Won't Believe It's On!"

Attaching Back the Impeller



Figure 1



Figure 2



Figure 3



Figure 4

Warning: Do not overtighten the nut.



Figure 5

Note: When attaching back the impeller, make sure that the open tube in the middle of the impeller is aligned evenly to the metal rod in the center of the motor. The metal rod should not be sticking out of the tube.



KOBE Range Hoods

"So Quiet...You Won't Believe It's On!"

More on attaching the impeller:

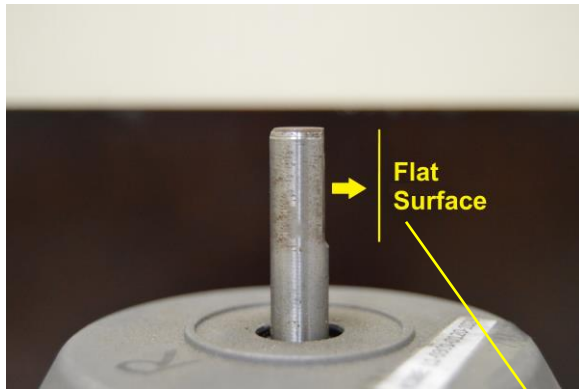


Figure 1

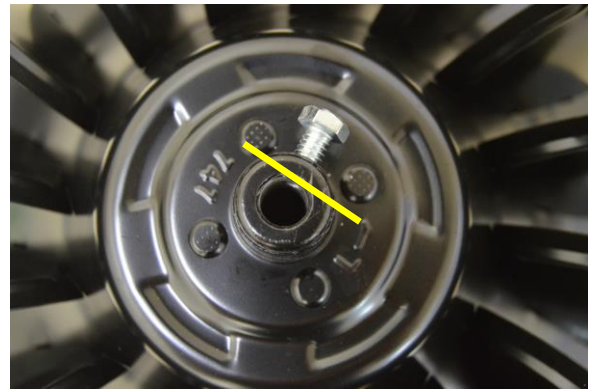


Figure 2

Warning: Make sure to attach the screw on the flat surface of the motor's metal rod.

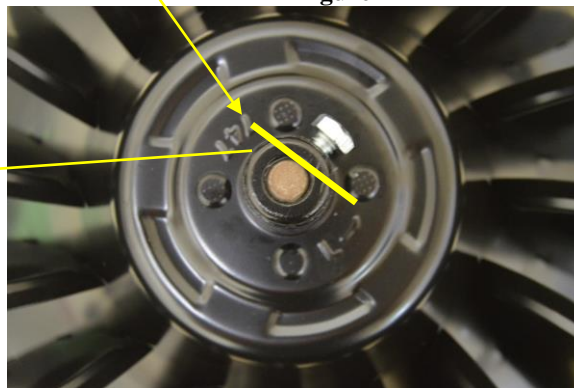


Figure 3



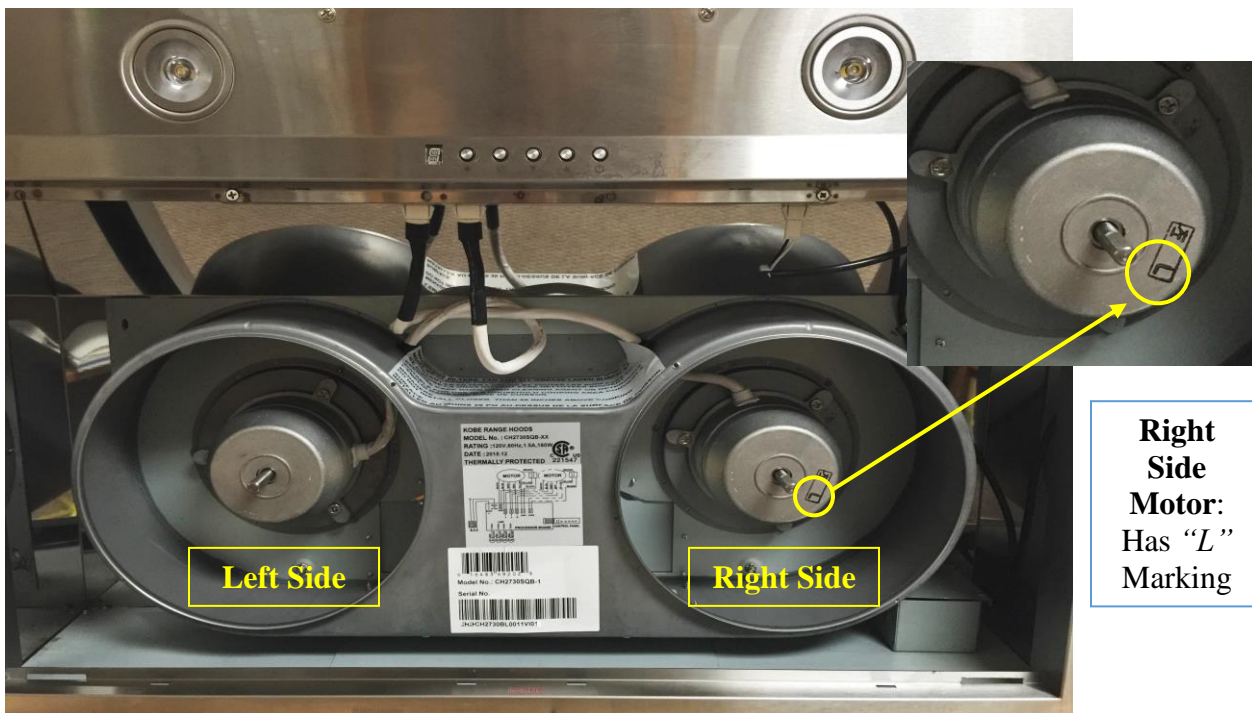
Figure 4



KOBE Range Hoods

"So Quiet...You Won't Believe It's On!"

Placing the Impellers in their Correct Positions



Left Side Motor:
Has *No* Marking

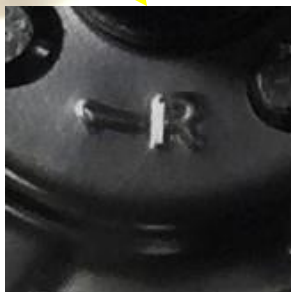
Right Side Motor:
Has "L" Marking

Left Side Impeller

(Turbine Impeller B—Part #: L1-0251-0747-B)



"←R" means motor rotates clockwise (to the Right)



Right Side Impeller

(Turbine Impeller A—Part #: L1-0251-0747-A)



"L→" means motor rotates counterclockwise (to the Left)

