



## KOBE Range Hoods

*"So Quiet...You Won't Believe It's On!"*

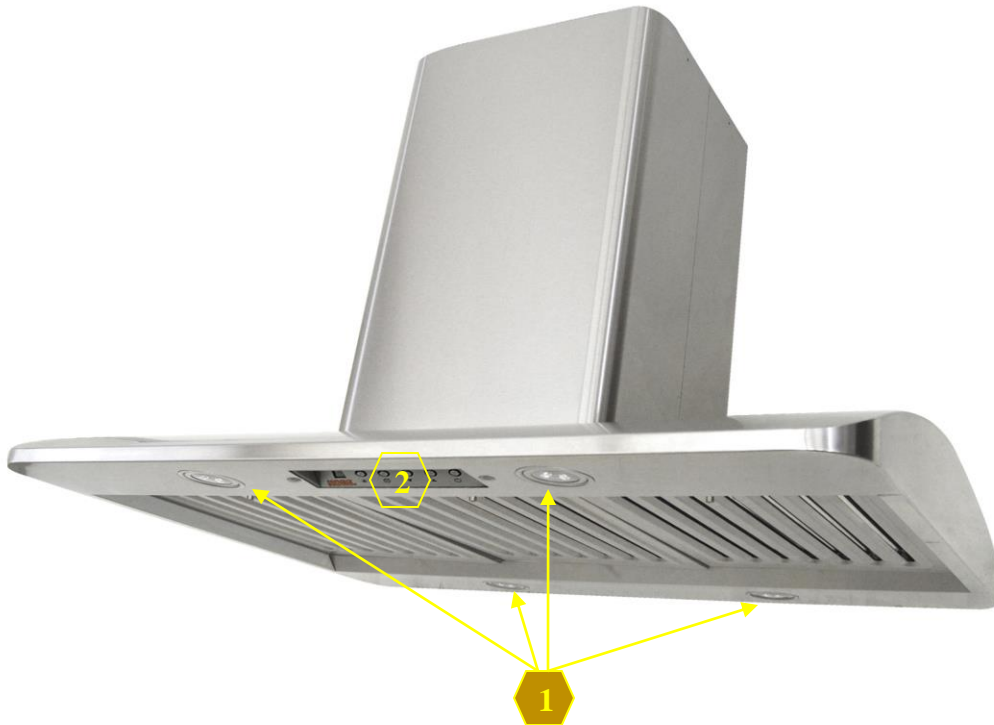
### IS22 SQB-1 Parts Location and Replacement

*This basic guide is to show the parts location of the IS22 SQB-1 and how to remove or install certain parts.  
To see more detailed guidelines, please visit: [Kobe Service and Repair](#)*

*For 36" island models: IS2236SQB-DC16-1, IS2236SQB-DC22-1, IS2236SQB-DC59-1*

*For 42" island models: IS2242SQB-DC16-1, IS2242SQB-DC22-1, IS2242SQB-DC59-1*

#### Overall Snapshot of IS22 SQB-1



1. LED Light (3W) ([Manual](#) Part #1 – See “Parts List” page on manual)
2. Control Panel ([Manual](#) Part #2 – See “Parts List” page on manual)



## KOBE Range Hoods

*"So Quiet...You Won't Believe It's On!"*

### Accessing the Capacitor and Processor Board

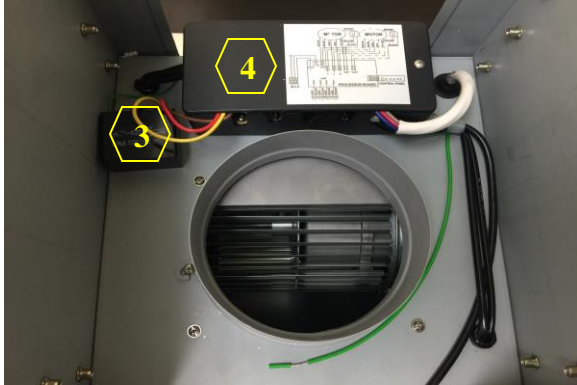


Figure 1

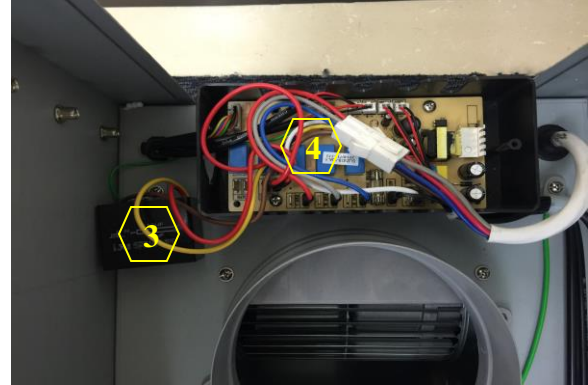


Figure 2

- 3. Capacitor ([Manual](#) Part #8 – See “Parts List” page on manual)
- 4. Processor Board ([Manual](#) Part #7 – See “Parts List” page on manual)

### Accessing the LED Light



*For a more detailed guideline, visit:*  
[How to Replace LED Lights](#)



# KOBE Range Hoods

*"So Quiet...You Won't Believe It's On!"*

## Removing the Control Panel

*Warning: Loosen the screw first with a hand tool screw driver.*



Figure 1



Figure 2

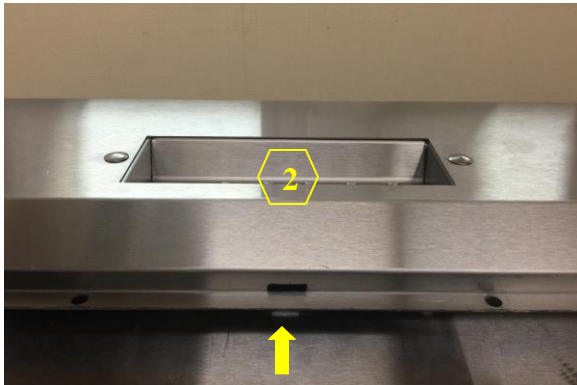


Figure 3



Figure 4

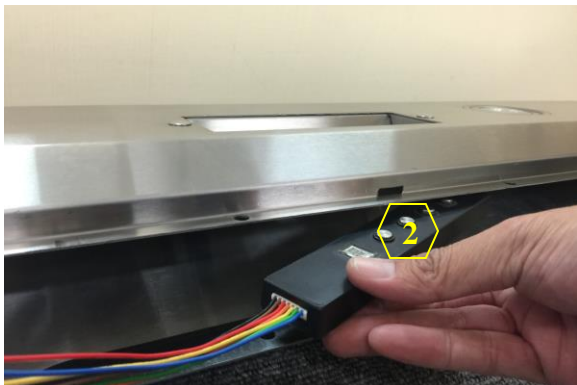


Figure 5

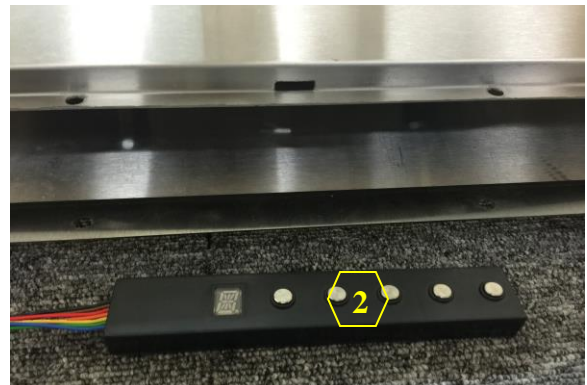


Figure 6



# KOBE Range Hoods

*"So Quiet...You Won't Believe It's On!"*

## Removing the Blower System

**Warning:**

1. Loosen the screw first with a hand tool screw driver.
2. Place a support or hold the blower before removing it.

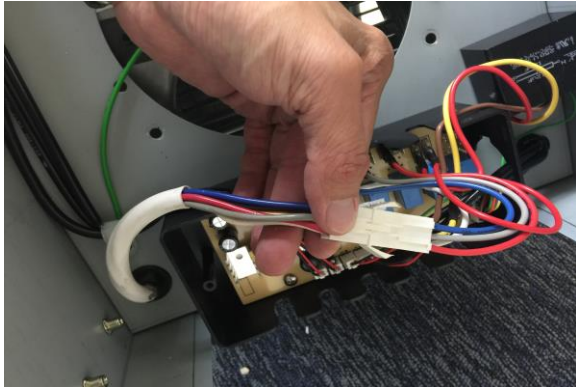


Figure 1

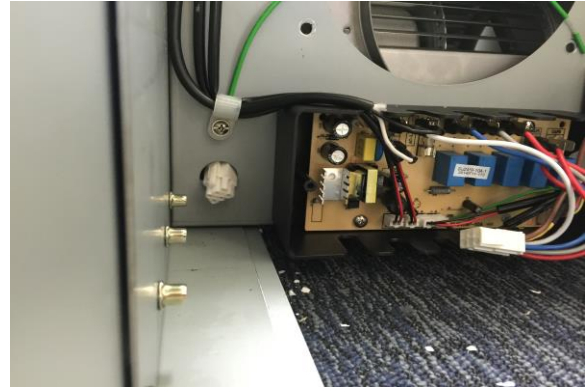


Figure 2



Figure 3



Figure 4



Figure 5

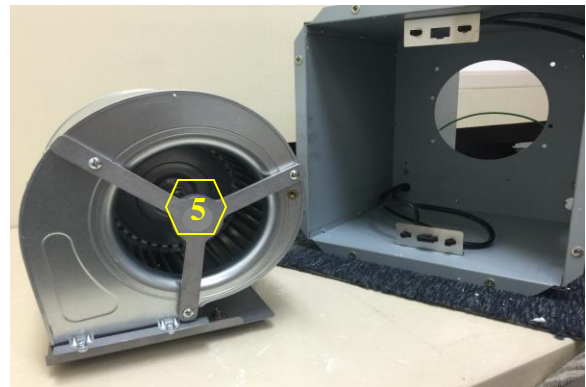


Figure 5

5. Blower System ([Manual](#) Part #9 – See “Parts List” page on manual)