



# KOBE Range Hoods

*"So Quiet...You Won't Believe It's On!"*

## LED "BB" Conversion Kit: Installation Manual

*This guide is to show the components of LED "BB" Conversion Kit and how it is installed.*

### Part 1: Parts Required to Replace Halogen Lamps with LED Lights



Figure 1: LED Light - 3 pcs



Figure 2: LED Driver - 1 pc

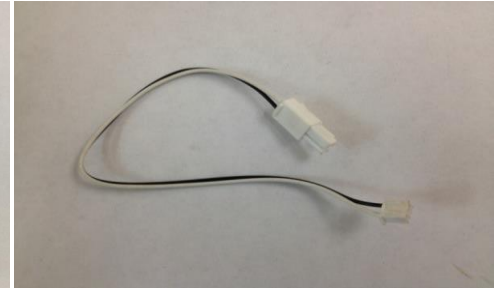


Figure 3: LED Light Primary Connection Wire (120V) - 1 pc

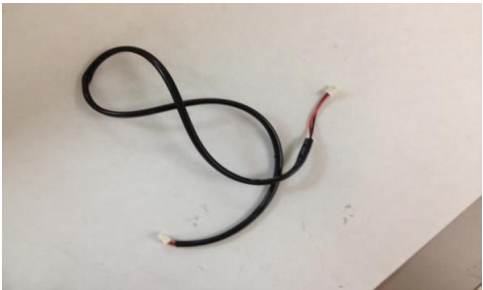


Figure 4: LED Light Secondary Connection Wire - 3 pcs



Figure 5: Screw - 4 pcs

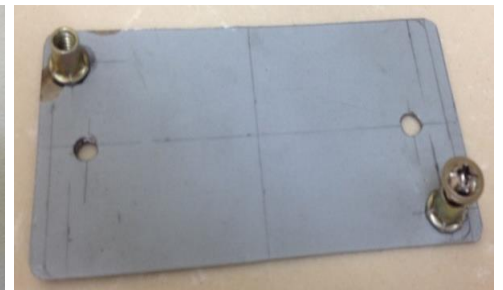
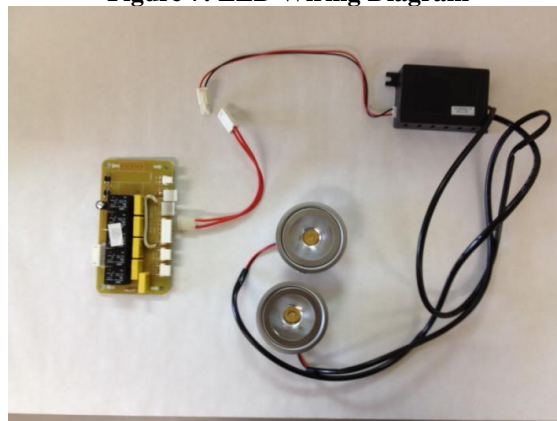


Figure 6: 'C Type' LED Driver Support - 1 pc

### Part 2: Installation

Figure 7: LED Wiring Diagram





# KOBE Range Hoods

*"So Quiet... You Won't Believe It's On!"*

## 2.1 Installation Instruction

- A. Disconnect the power supply then remove the baffle filters from the bottom of the range hood.
- B. Find the halogen lamp transformer (see figure 8) and the transformer location (see figure 9).

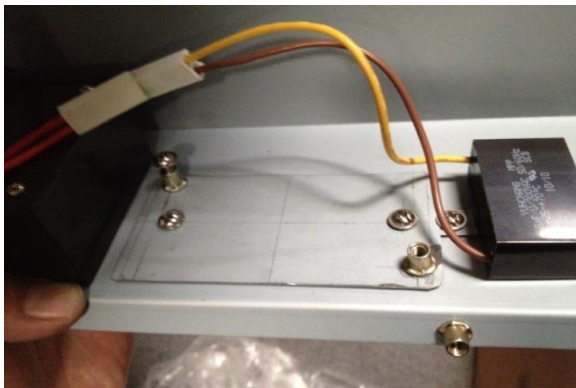


**Figure 8: Halogen Lamp Transformers**



**Figure 9: Transformer Location**

- C. Disconnect the transformer connector for lamps and the power. Remove the transformer along with mounting plate.
- D. Mount LED driver onto the bracket (see figure 10).



**Figure 10: Mount Bracket on Transformer Location**



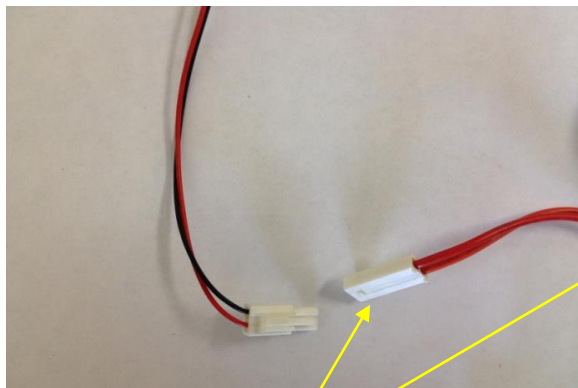
**Figure 11: Mount LED Drive on Bracket**

Note: On figure 11, the end with two wires connected will be called the "secondary side". Connect these wires to the LED light. On the other end, there is only one wire connected; this wire will be connected to the 120V on the processor board. This end will be called the "primary side".

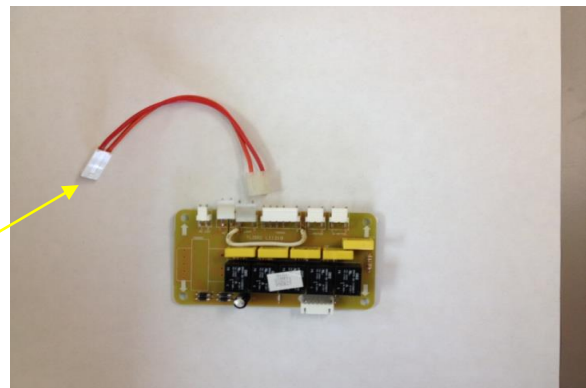
- E. Place LED light driver on the location where original transformers was. Initially, there were two halogen lamp transformers. After converting to LED lights, there should be one LED light driver only. The driver should be mounted on the original transformer spot (which is closer to the circuit board).



**Figure 12: LED Driver Mounted**



**Figure 13: Connect the Power Wire to the LED Driver**



**Figure 14: Wire to the Circuit Board**

Note: The connector can be found inside the hood. This was removed from the halogen lamp transformer.

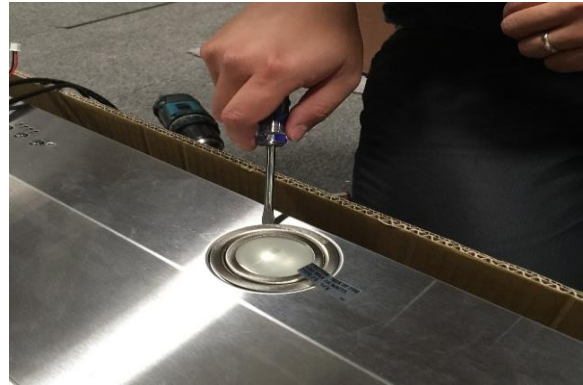


## KOBE Range Hoods

*"So Quiet...You Won't Believe It's On!"*



**Figure 15a: Push the Halogen Lamp Inside Out**



**Figure 15b: Alternate Lamp Removal**

F. Remove the halogen lamp and wire from the unit. To remove the halogen lamp (w/ lamp housing), push it from inside out. Another way is to use a flat head screw driver, gently pry the light housing from the unit.

G. To complete the installation, push in the LED lights in to their place.



**Figure 16: Connect the wire into the LED Light Socket**



**Figure 17: Push in LED Light into Position**