

Step 1.  
Unpack The Duct Cover.



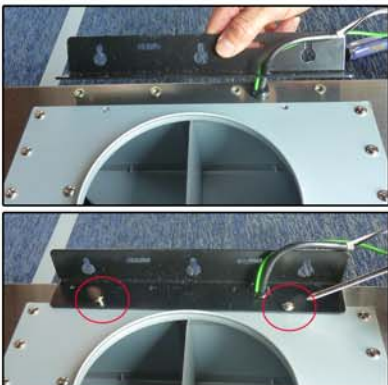
Step 2.  
Check Duct Cover hardware.  
1pc - Duct Cover Mounting Bracket  
2pcs - Duct Cover Support  
1pc - Black Hood Mounting Bracket  
4pcs - Small Screws  
6pcs - Large Screws



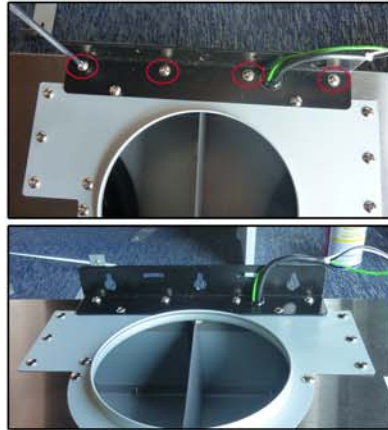
Step 3.  
Unscrew 2 screws from the back of the original attached vent.



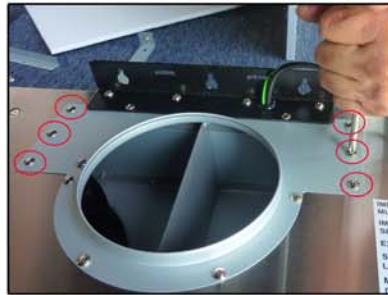
Step 4.  
Using the same 2 screws that were removed, install the Black Hood Mounting Bracket.



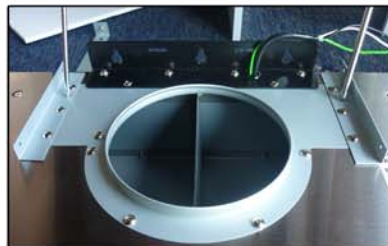
Step 5.  
Use additional 4 large screws for Black Hood Mounting Bracket.



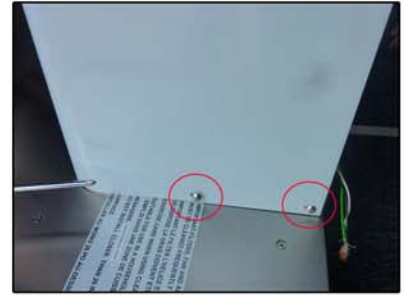
Step 6.  
Unscrew 3 screws on each side of the original attached vent.



Step 7.  
Using the same screws that were removed, install the Duct Cover Support on each side.



Step 8.  
Place and align the Duct Cover on top of the hood. Secure the Duct Cover to the Duct Cover Bracket using 2 small screws on each side.



Step 9.  
Measure the desired height for the Duct Cover and attach the Duct Cover Mounting Bracket to the wall. (Screws not Included)



Step 10.  
Use 1 large screw on each side to secure the inner Duct Cover to the Duct Cover Mounting Bracket.



Back view

